

CONTENT	SHEET
Cover Sheet, Block diagram	1-2
Intel LGA775 CPU - Signals/ Power/ GND	3-5
Intel Eaglelake - FSB, PCIE, DMI, VGA, MSIC	6
Intel Eaglelake - Memory DDR2	7
Intel Eaglelake - Power / GND	8-9
ICH9/10 - PCI, USB, DMI, PCIE	10
ICH9/10 - Host, DMI, SATA, Audio, SPI, RTC, MSIC	11
ICH9/10 - Power, GND	12
DDR2 Chanel-A / Chanel-B	13-14
Clock Gen ICS9LPRS110	15
Super I/O Fintek F71882	16
SATA / FAN Control	17
LAN Realtek RTL8111C(PCIE)	18
Audio Codec RTL888	19
PCIE x16, x1*2	20
Onboard VGA	21
PCI Slot 1 & 2 & 3	22
1394 Controller - JMB381	23
JMB-363 SATA X2/ IDE X1	24
USB Connectors	25
System Power/ACPI Controller UPI	26
DDR2 / NB-Core Switching Power	27
VRD 11.1 - (3Phases)	28
ATX Power-Con. / F_Panel	29
Manual & Option Parts	30
Power Delivery	31
Reset & PWROK map	32
GPIO Setting & PCI Routing / Revision History	33-35

MS-7519

ATX Version: 0A

CPU: Intel Pentium 4, Pentium D, Core2 Duo, Wolfdale, Kentsfield and Yorkfield processors in LGA775 Package.

System Chipset:

Intel Eaglelake - G/P (G, P3North Bridge)
Intel ICH10 (South Bridge)

On Board Device:

CLOCK Gen -- ICS 9LPRS110A
LPC Super I/O -- Fintek F71882F
LAN -- Realtek 8111C (PCIE)
HD Audio Codec -- RTL888
1394 Controller -- JMB381
PCIE to PATA/SATA Bridge -- JMB363


Main Memory:

Dual-channel DDR-II * 4

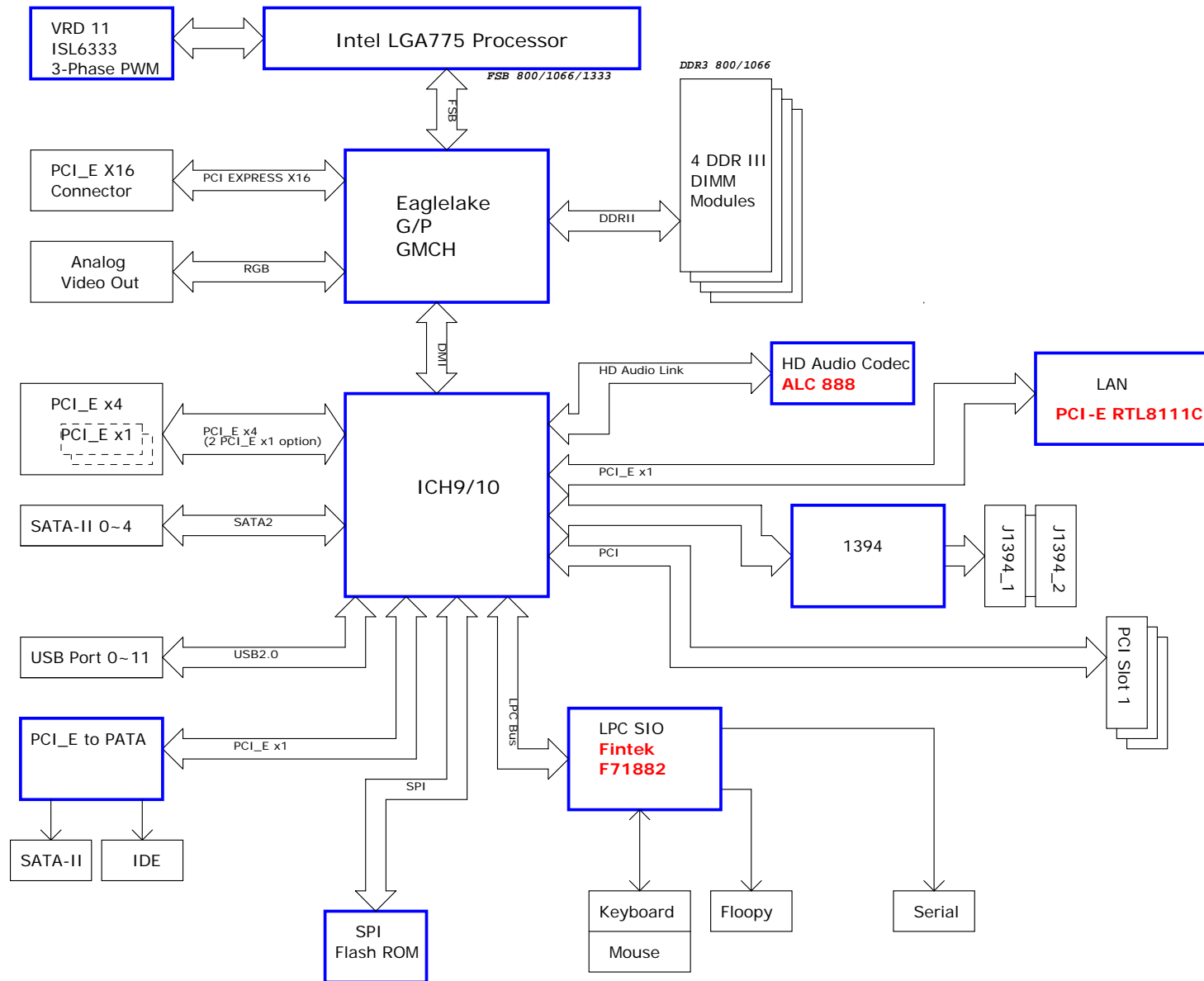
Expansion Slots:

PCI EXPRESS X16 SLOT *1
PCI EXPRESS X1 SLOT * 2
PCI SLOT * 3

PWM: ISL6333

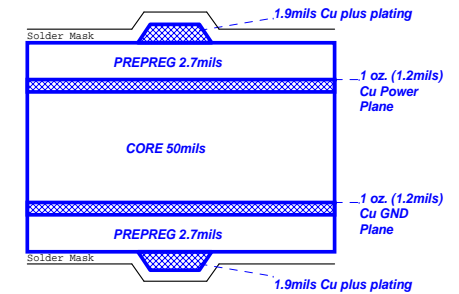
			MICRO-STAR INT'L CO.,LTD	
			MS-7519	
Size Custom	Document Description COVER SHEET			Rev 0A
Date: Monday, March 10, 2008		Sheet 1 of 34		

Block Diagram



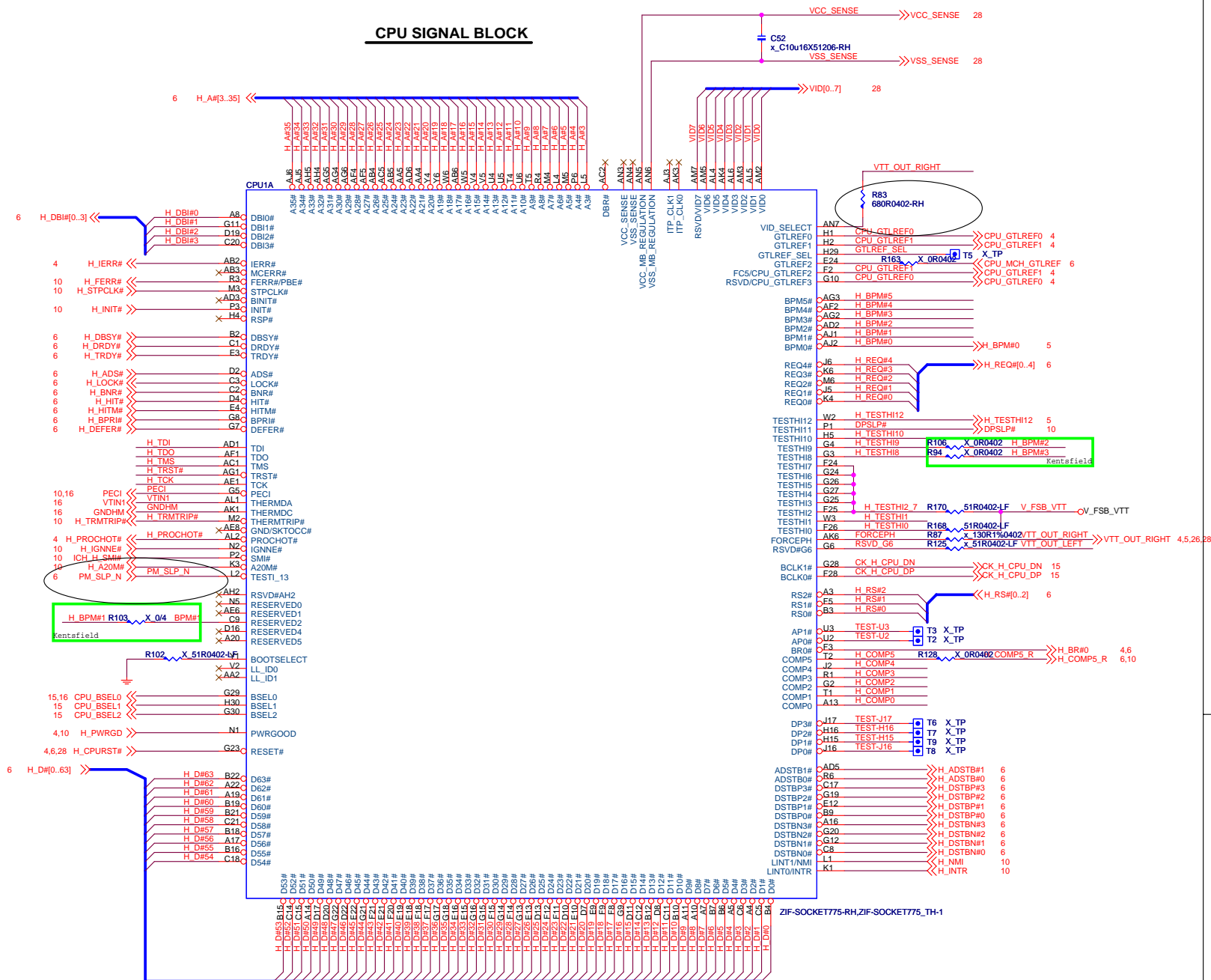
Board Stack-up

(1080 Prepreg Considerations)

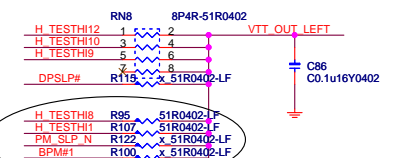
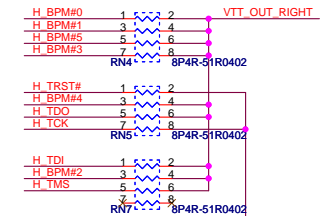
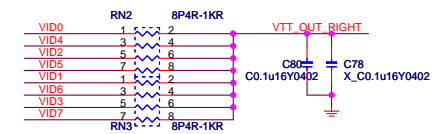


Single End 50ohm Top/Bottom : 4mils
 USB2.0 - 90ohm : 15/4.5/7.5/4.5/15
 SATA - 95ohm : 15/4/8/4/15
 LAN - 100ohm : 15/4/8/4/15
 PCIE - 95ohm : 15/4/8/4/15
 IEEE1394 - 110ohm : 15/4/9/4/15
 IDE : 15/4/8/4/15

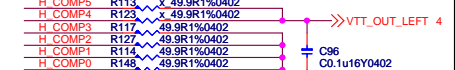
CPU SIGNAL BLOCK



PULL HIGHT PULL DOWN



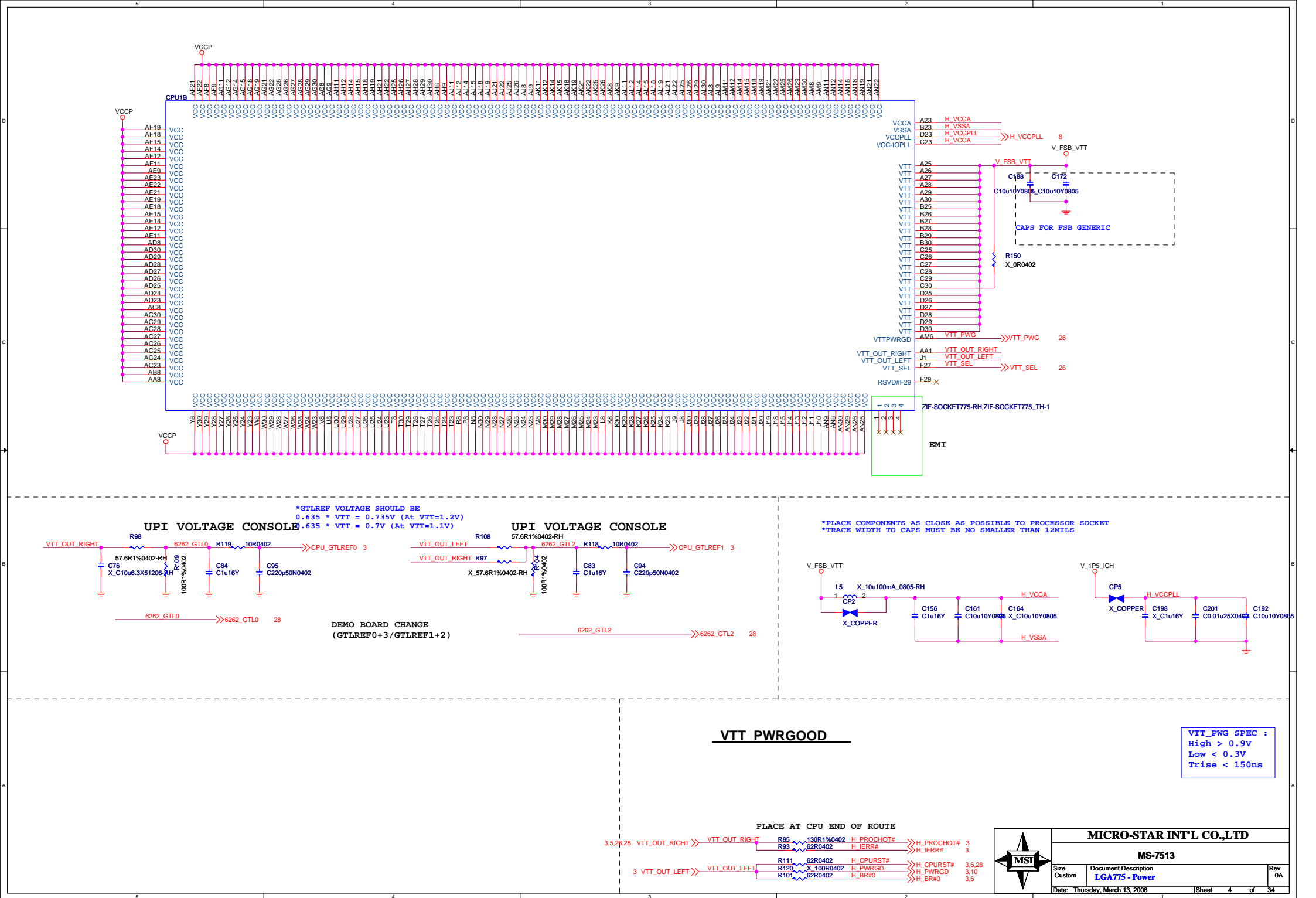
PM_SLP_N/H_TESTHI1
Demo schmatic is NC

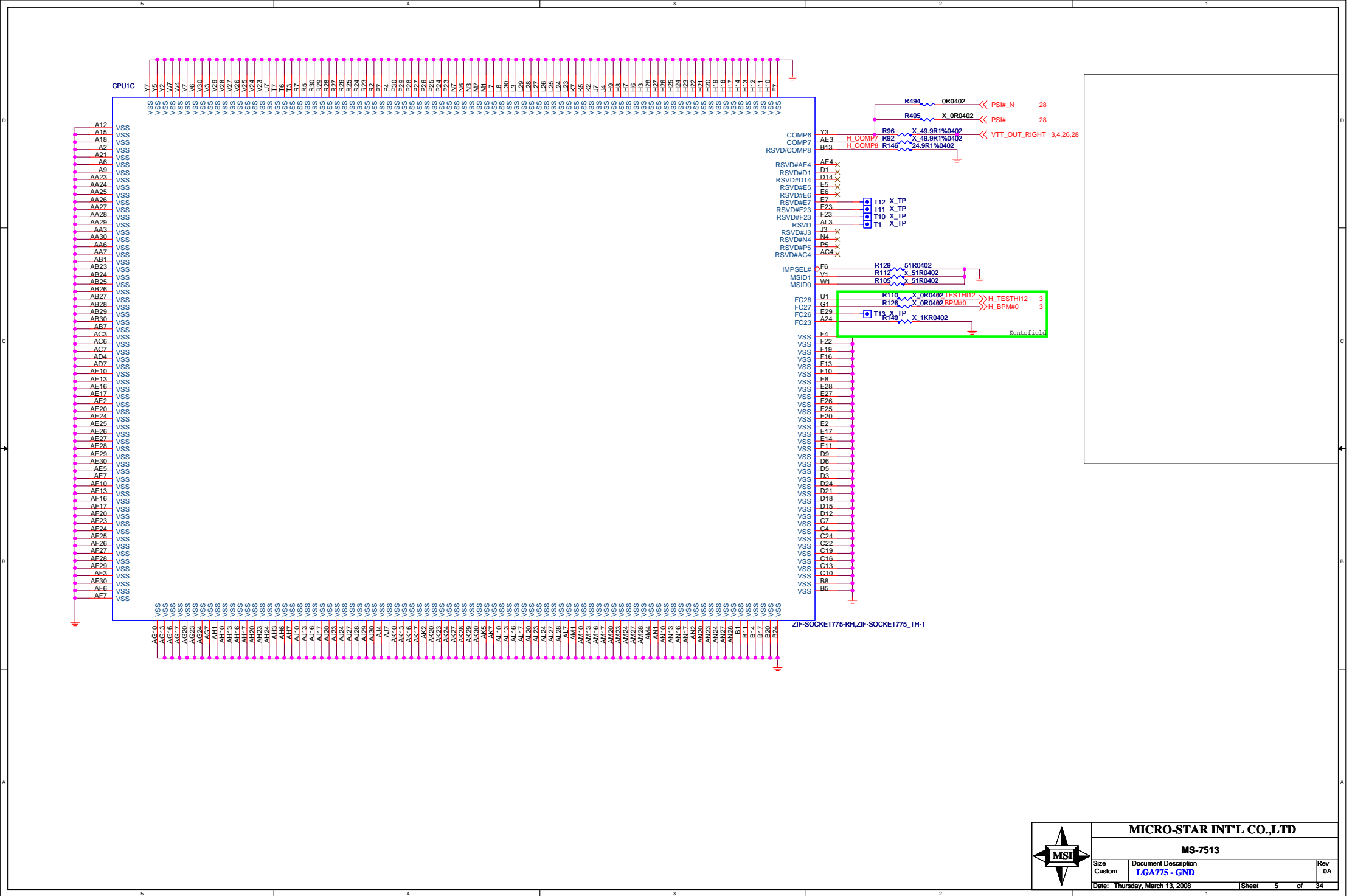


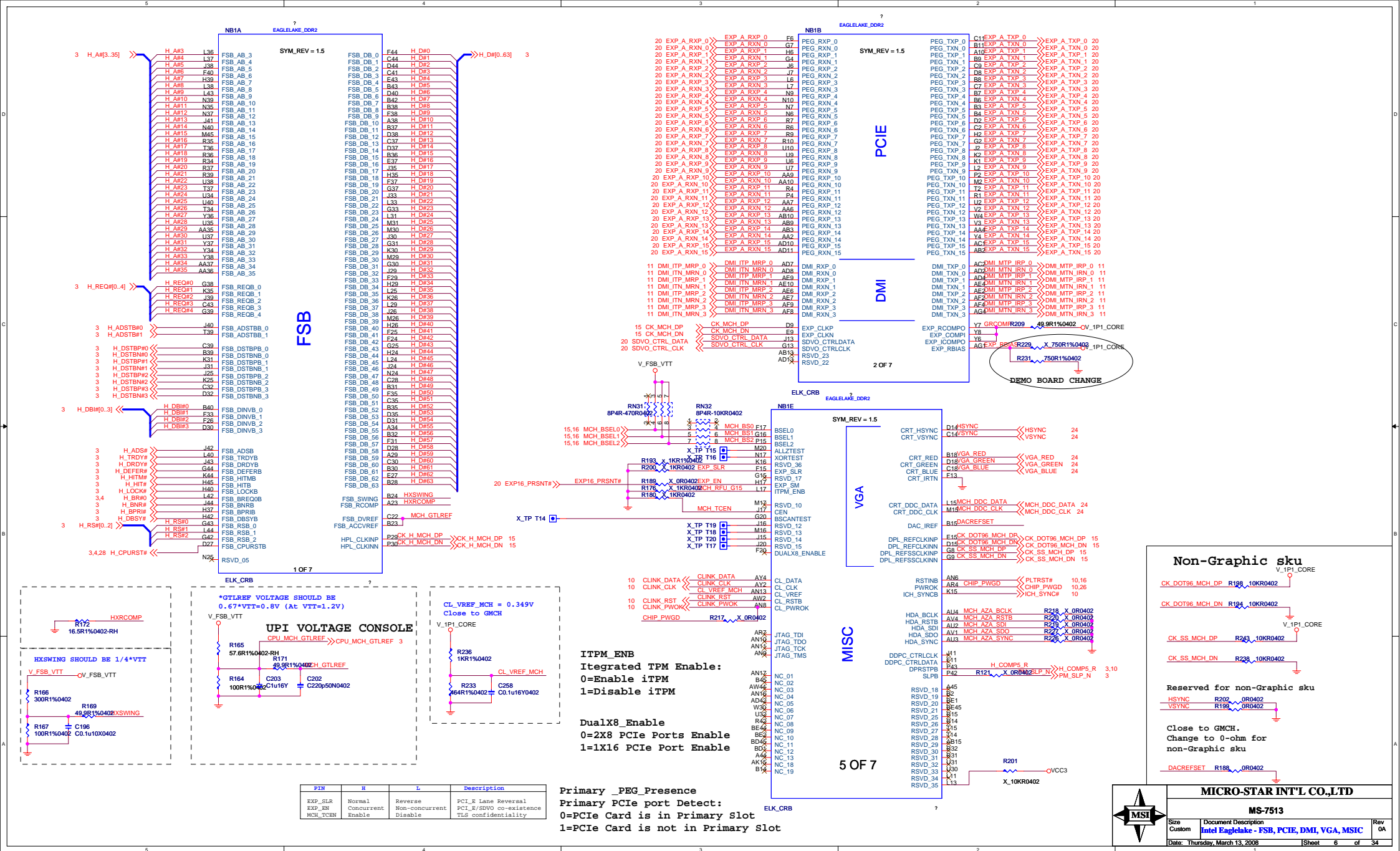
MICRO-STAR INT'L CO.,LTD

MS-7513

Size Custom	Document Description LGA775 - Signal	Rev 0A
Date: Thursday, March 13, 2008		Sheet 3 of 34



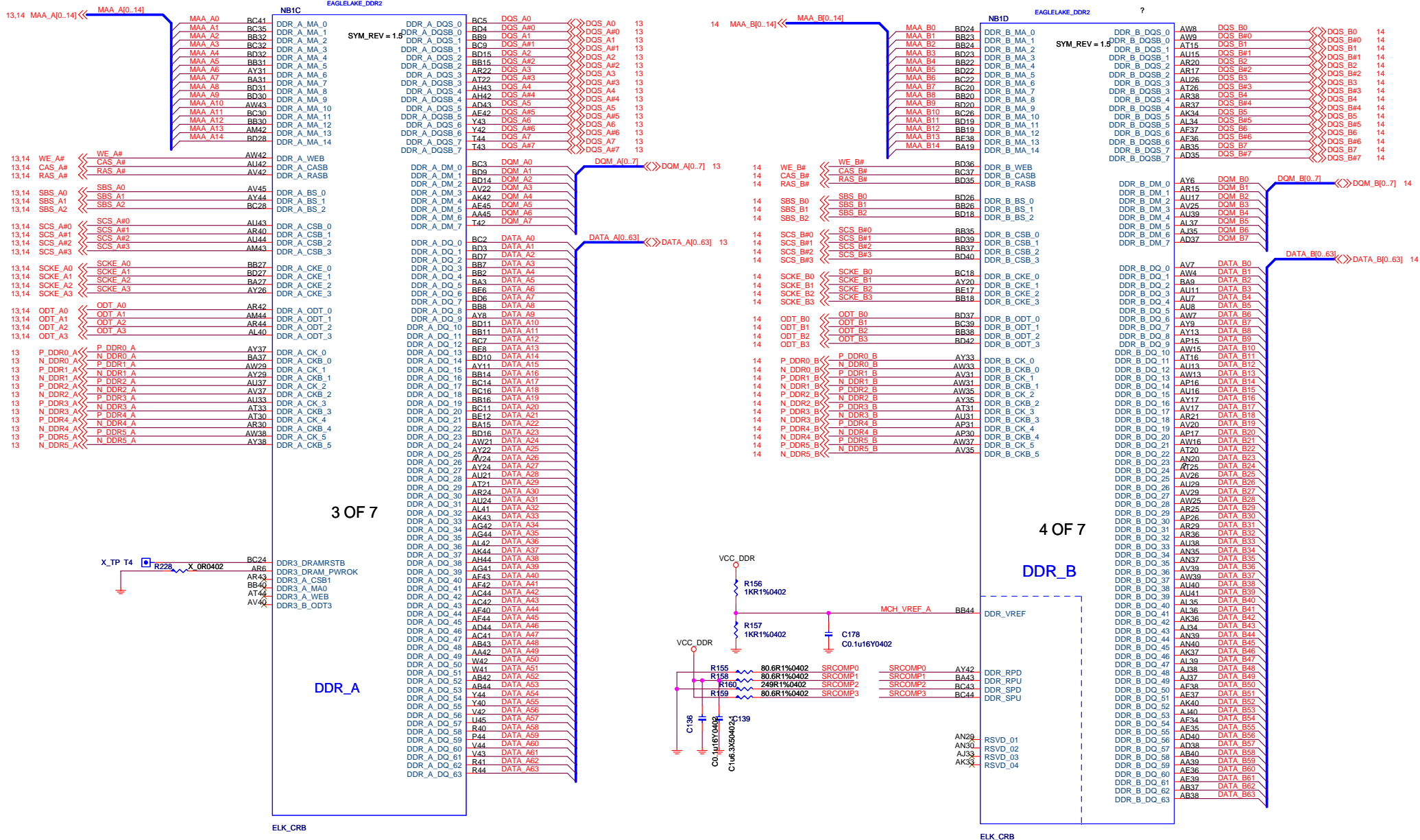


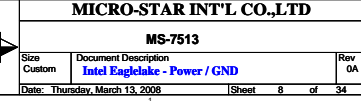


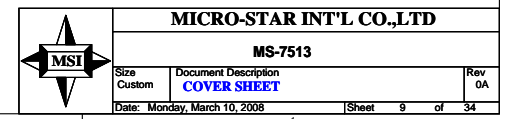
PIN	H	L	Description
EXP_SLR	Normal	Reverse	PCI_E Lane Reversal
EXP_EN	Concurrent	Non-concurrent	PCI_E/SDVO co-existence
MCH_TCEN	Enable	Disable	TLS confidentiality

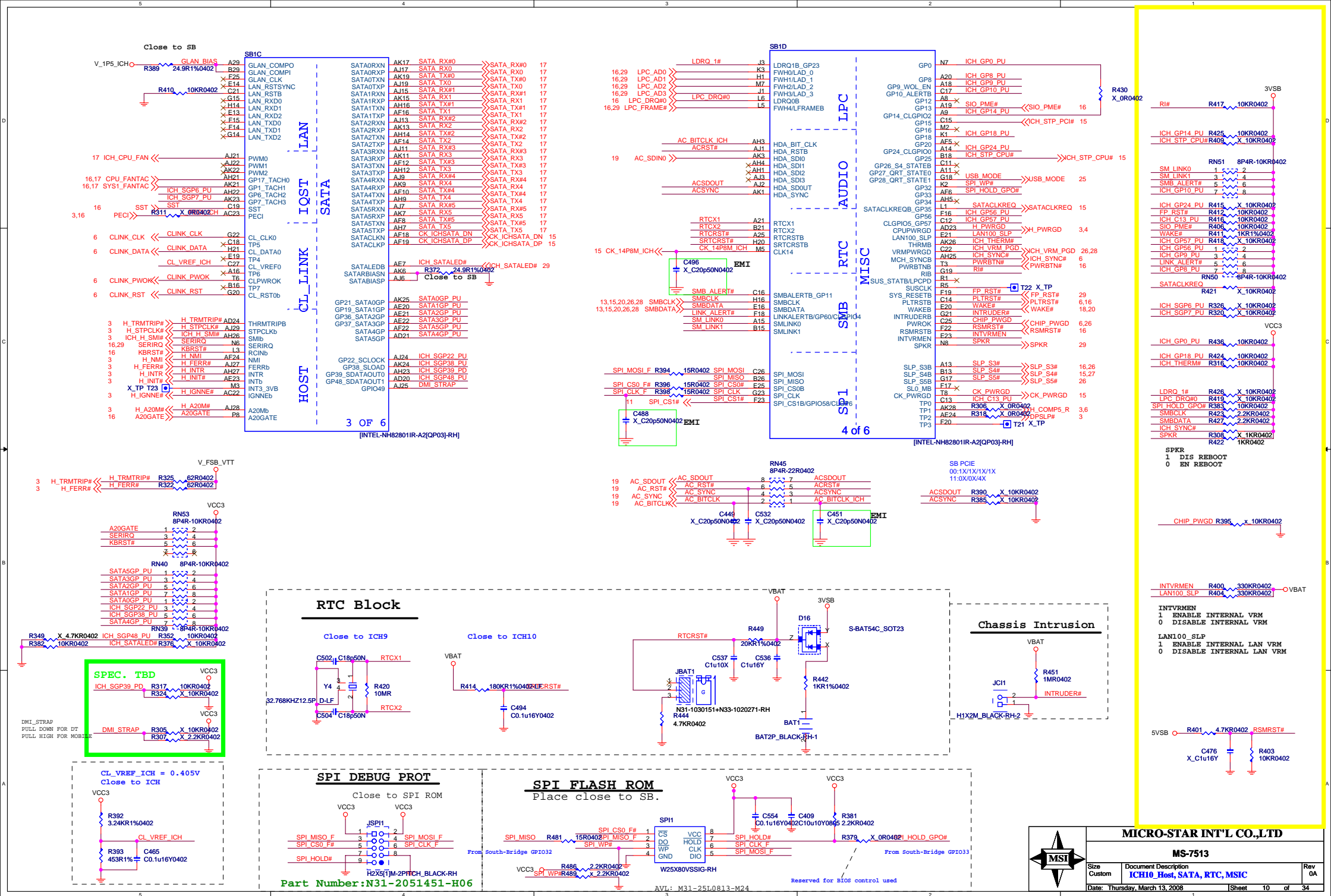
Primary_PEG_Presence
Primary_PCIE port Detect:
0=PCIe Card is in Primary Slot
1=PCIe Card is not in Primary Slot

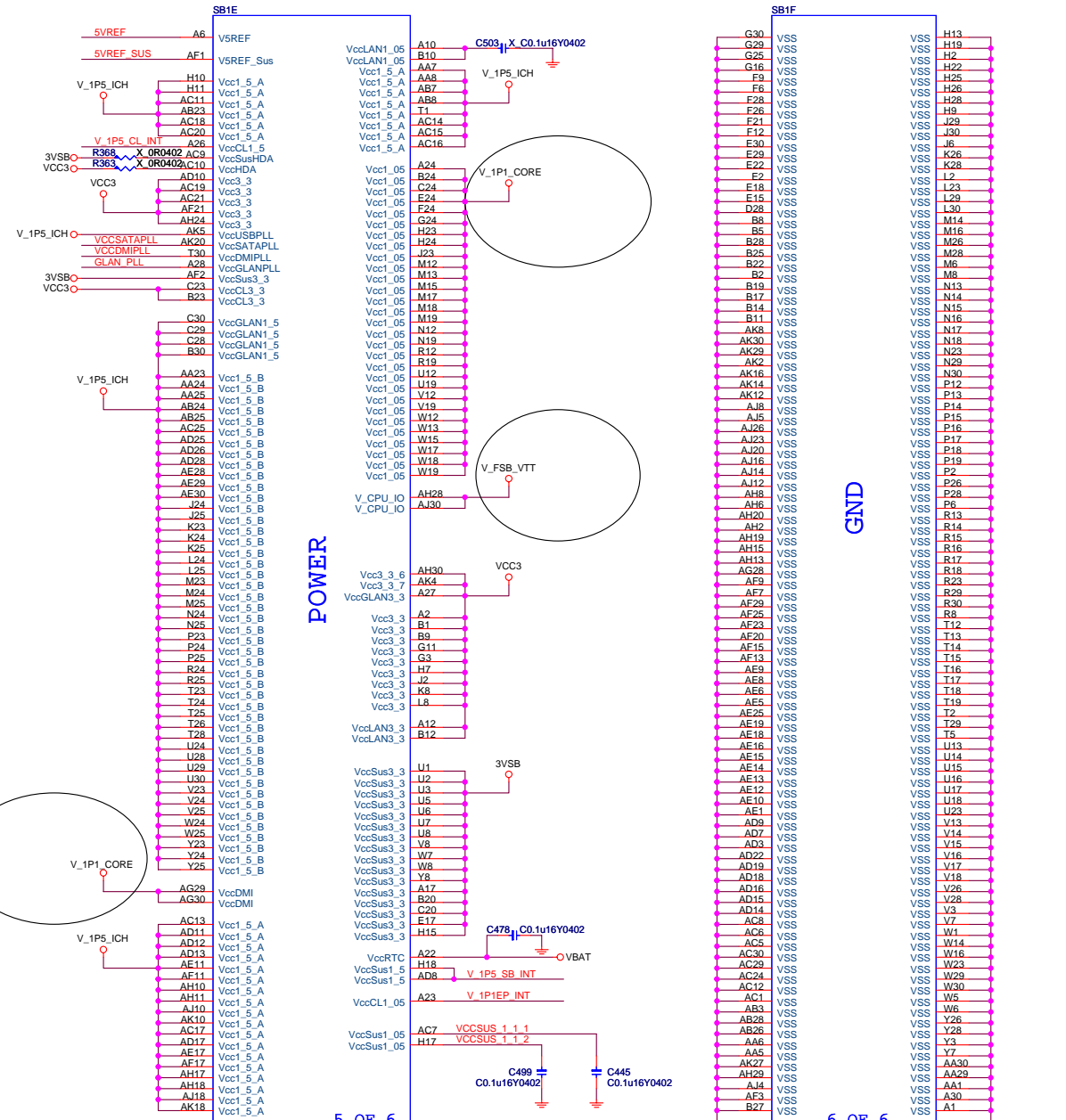
MICRO-STAR INT'L CO.,LTD		
MS-7513		
Size	Document Description	Rev
Custom	Intel Eaglelake - FSB, PCIE, DMI, VGA, MSIC	0A
Date: Thursday, March 13, 2008		Sheet 6 of 34

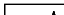


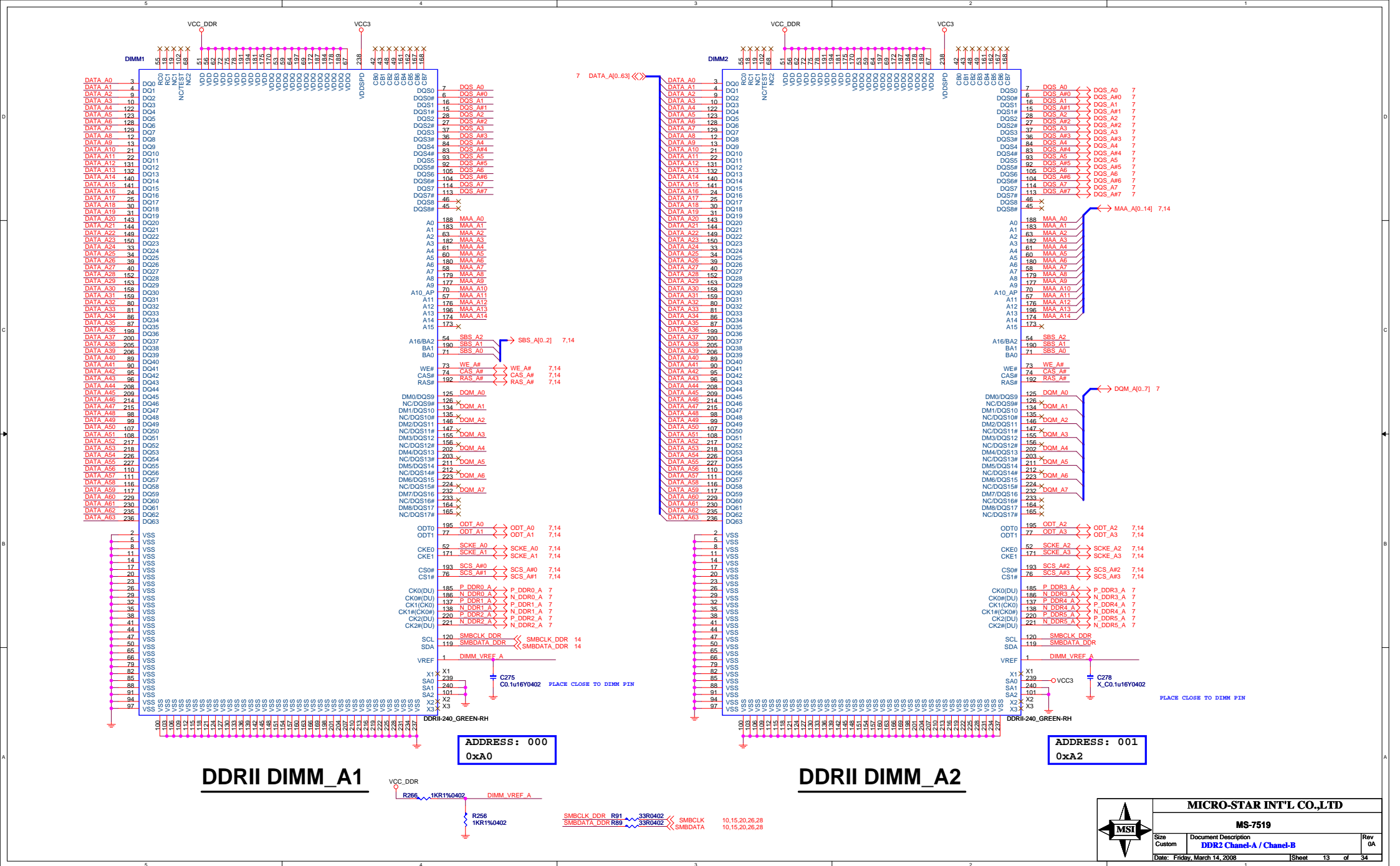


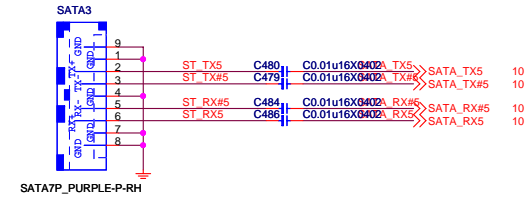
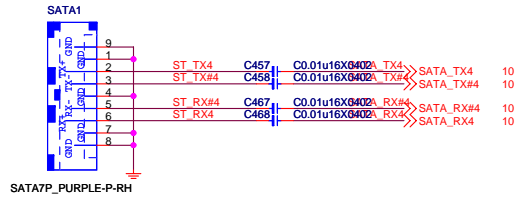
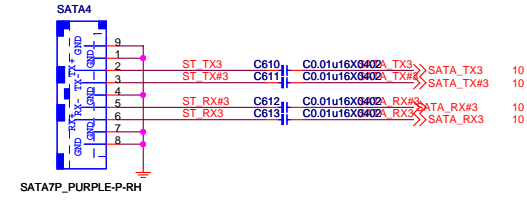
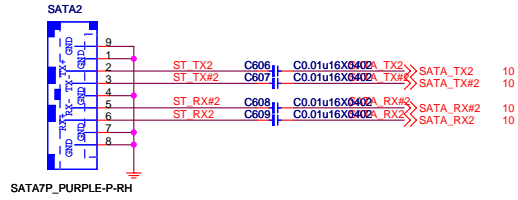
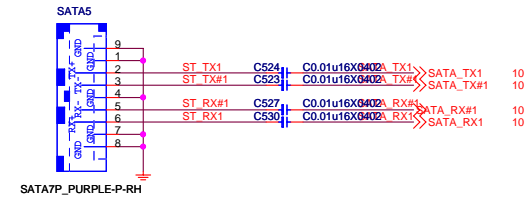
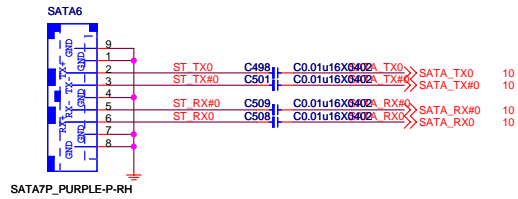




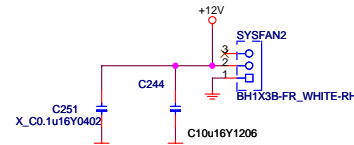
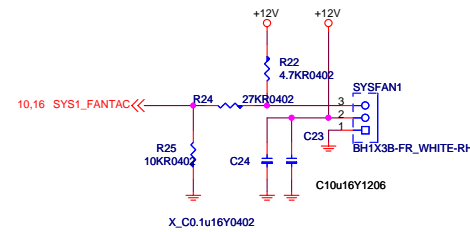
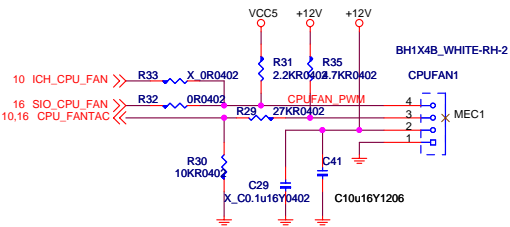


	MICRO-STAR INT'L CO.,LTD		
	MS-7513		
	Size	Document Description	Rev.
	Custom	ICH9/10 - Power, GND	0A
	Date: Wednesday, March 12, 2008		Sheet 12 of 34





FAN-COUNTROL CIRCUIT

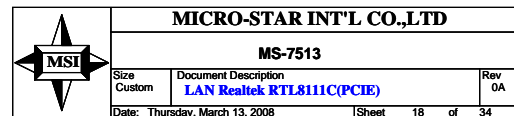
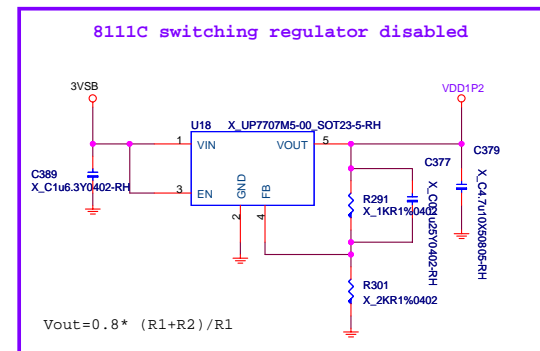
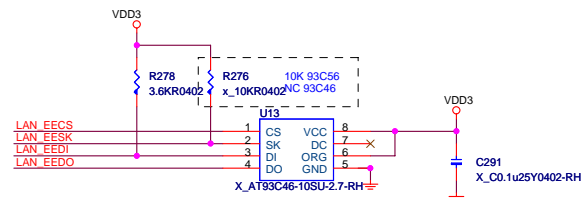


MICRO-STAR INT'L CO.,LTD

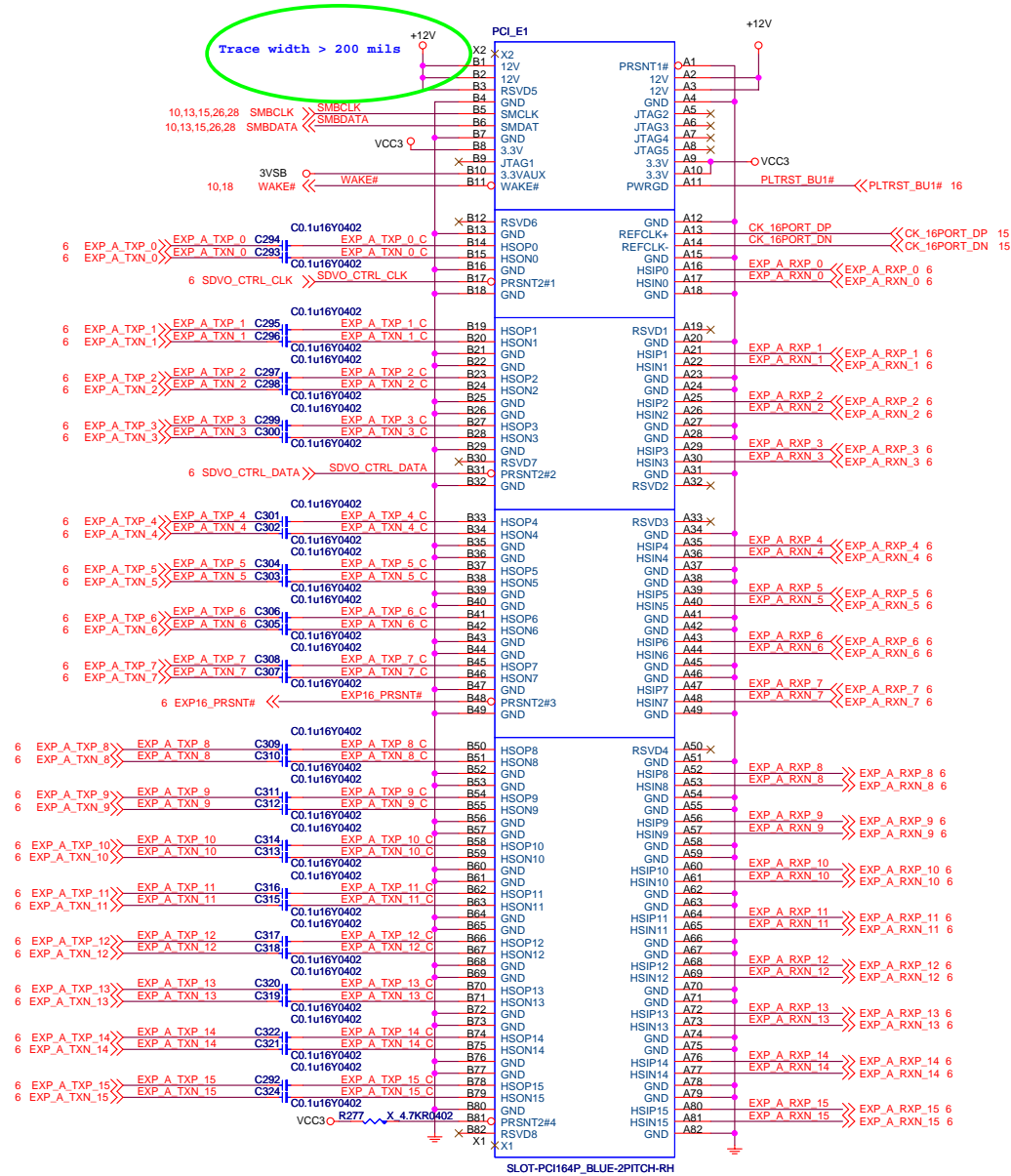
MS-7513

Size	Document Description	Rev
Custom	SATA & e-SATA Ports and Fan Control	0A
Date:	Thursday, March 13, 2008	Sheet 17 of 34

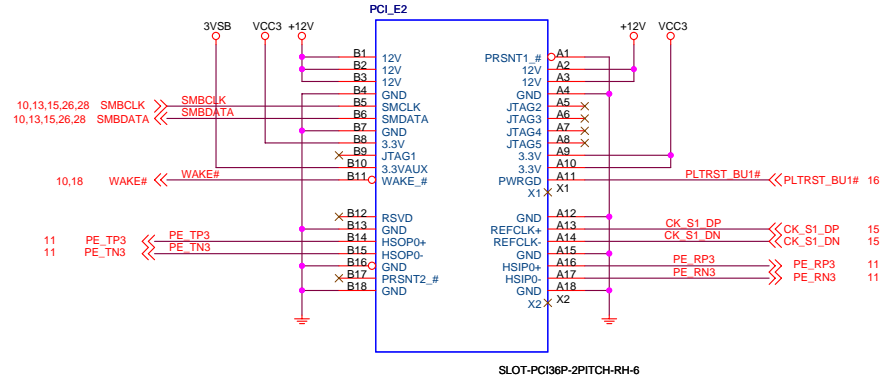
VDD33 40mil width R270 0R0805/VDDSR C330 C221010805 C01255R-H C01255V42-R C657 C346 near Pin63 200mil, C346 must be nearly Pin63



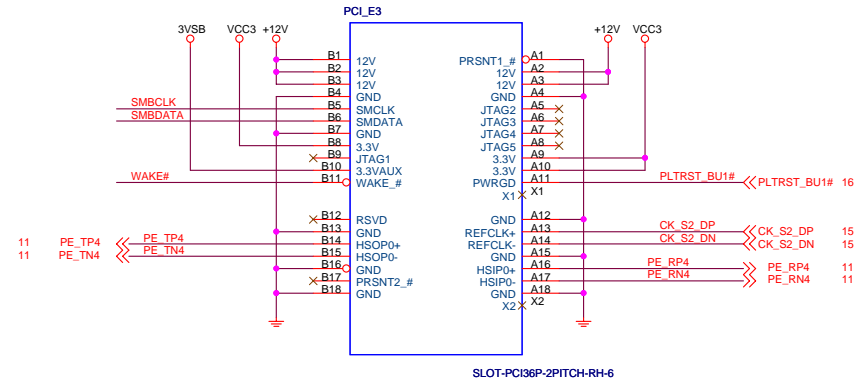
PCI_Express X16 Slot



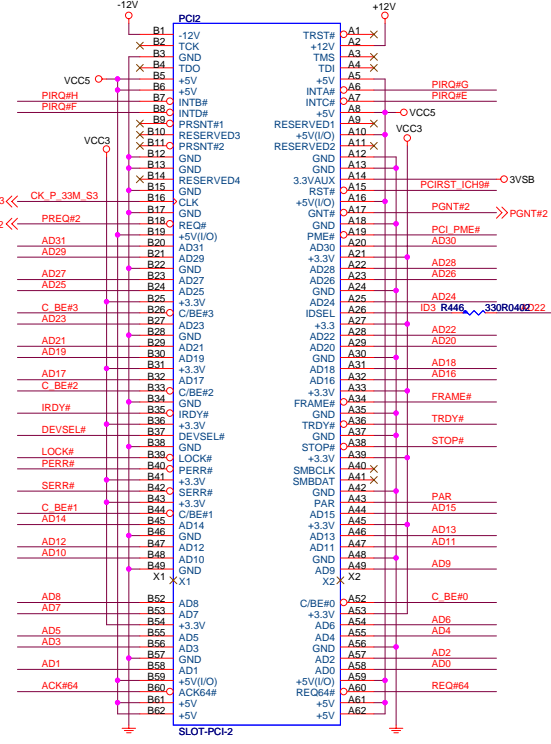
PCI EXPRESS x1-PORT



PCI EXPRESS x1-PORT



PCI SLOT 3 (PCI VER: 2.2 COMPLY)

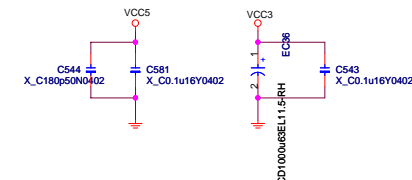


```

IDSEL = AD22
MASTER = PREQ#2
PIRQ#G

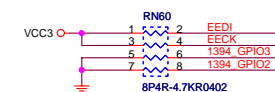
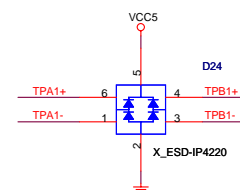
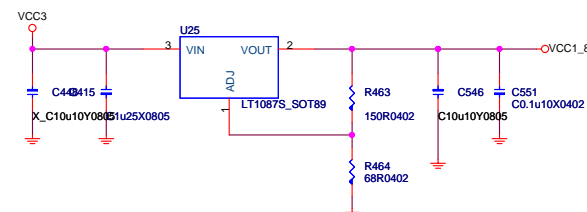
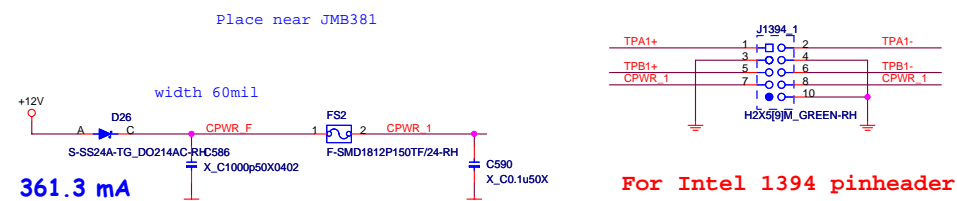
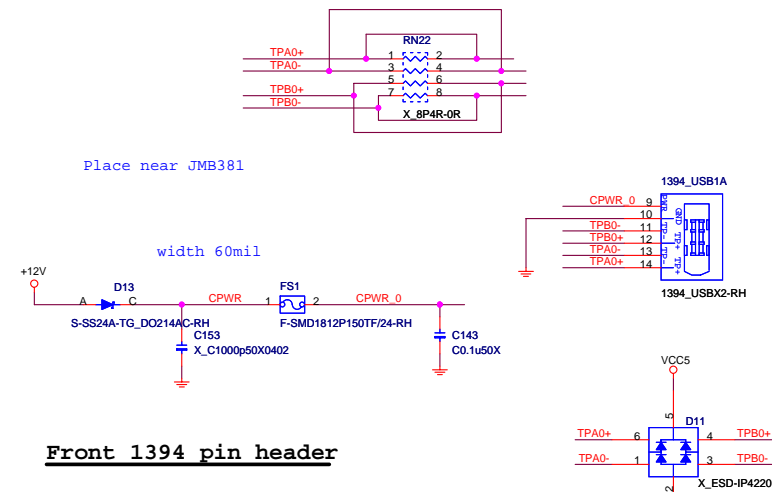
```

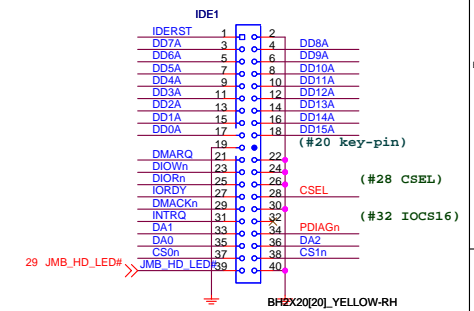
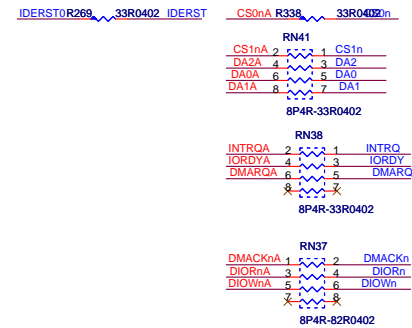
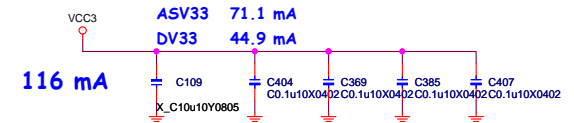
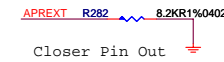
PCI SLOT DECOUPLING CAPACITORS




Size Custom	Document Description PCI Slot 1 & 2	Rev 0A
Date: Thursday, March 13, 2008		Sheet 21 of 34

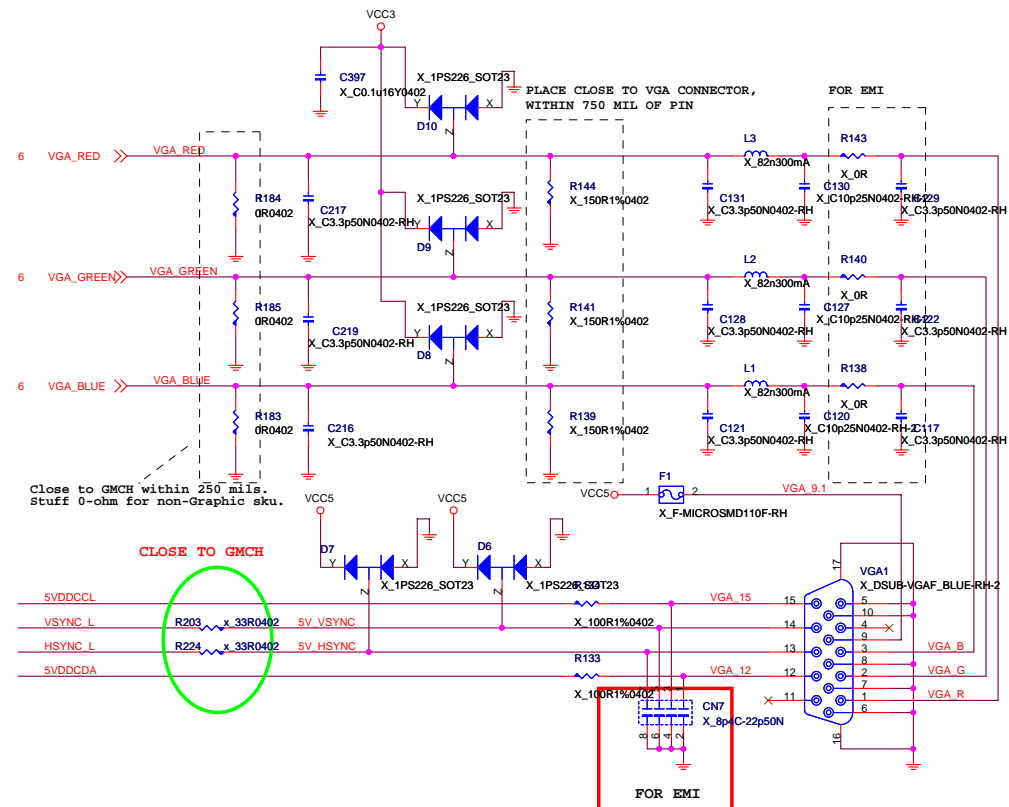
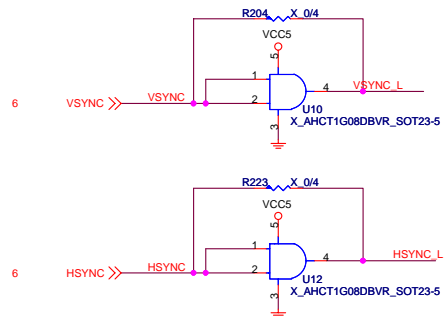
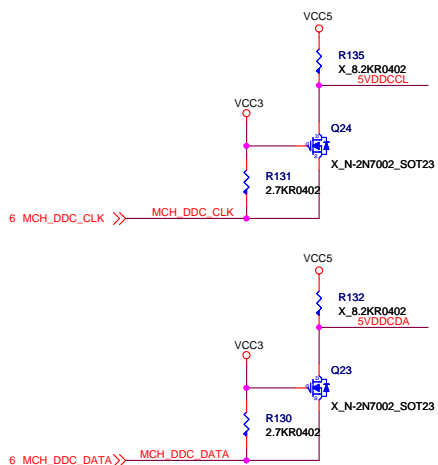
Rear 1394 port





	MICRO-STAR INT'L CO.,LTD		
	MS-7513		
	Size Custom	Document Description JMB-363 e-SATA X2/ IDE X1	Rev. 0A
	Date: Thursday, March 13, 2008		Sheet 23 of 34

Video Connector



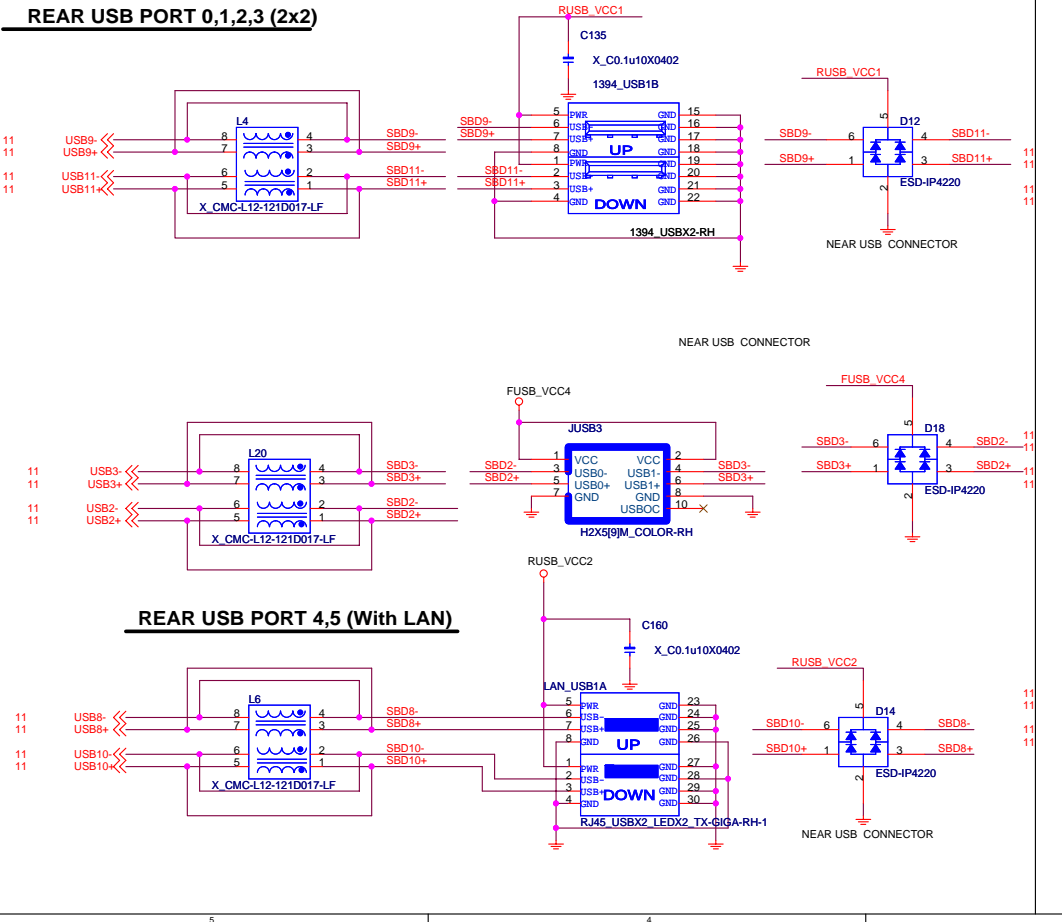
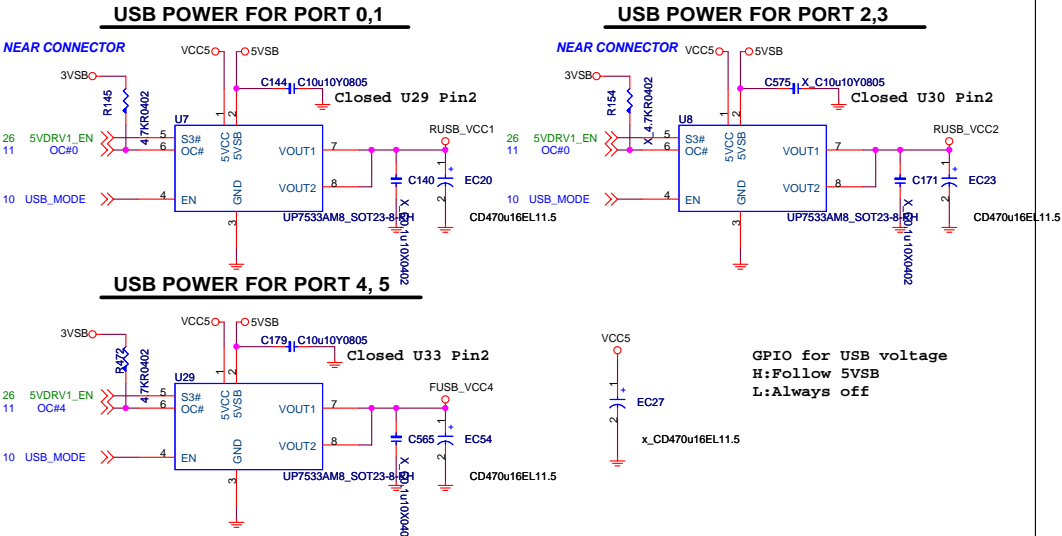
MICRO-STAR INT'L CO.,LTD

MS-7513

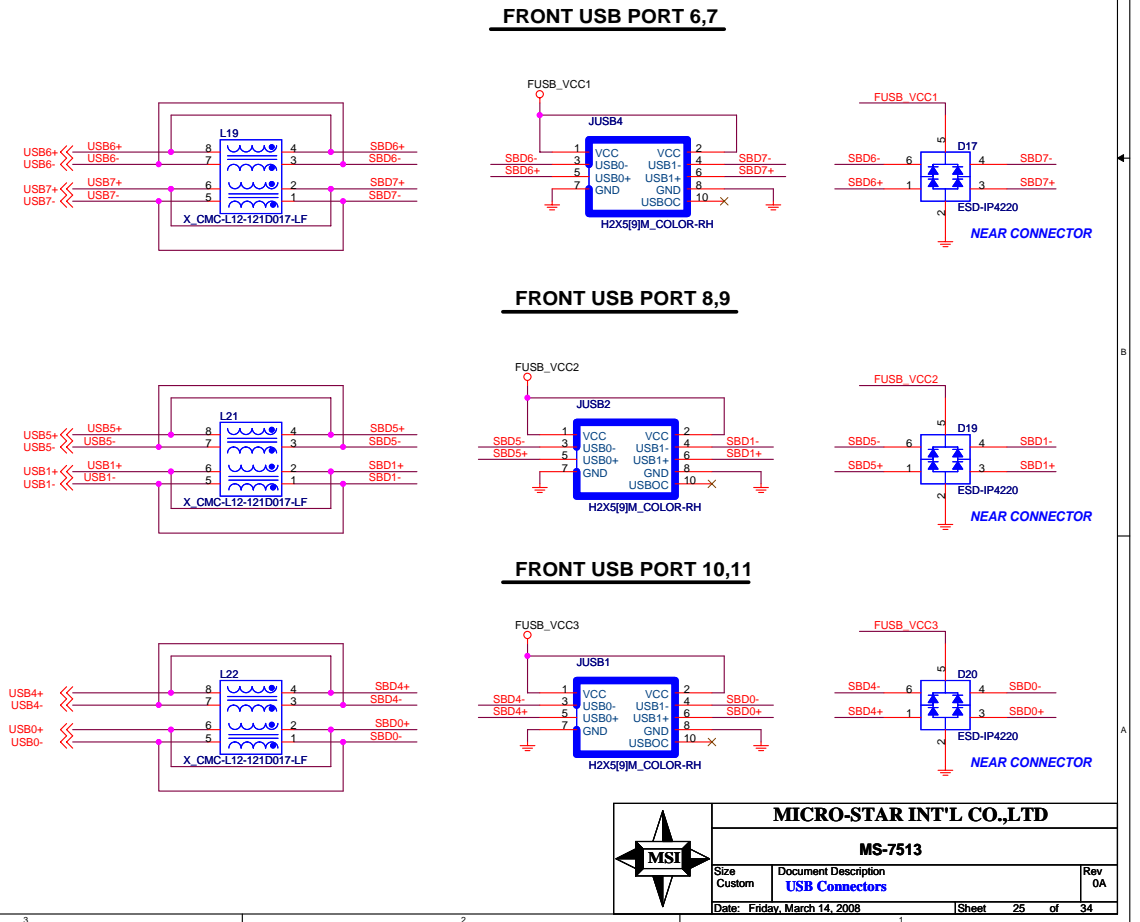
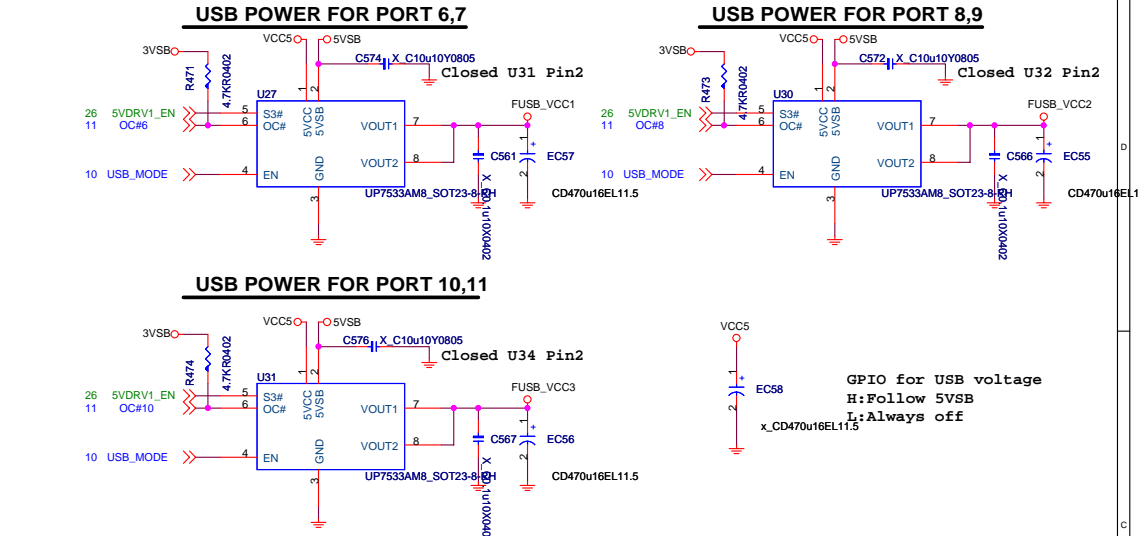
Size Custom	Document Description Onboard VGA	Rev 0A
----------------	--	-----------

Date: Thursday, March 13, 2008	Sheet 24 of 34
--------------------------------	----------------

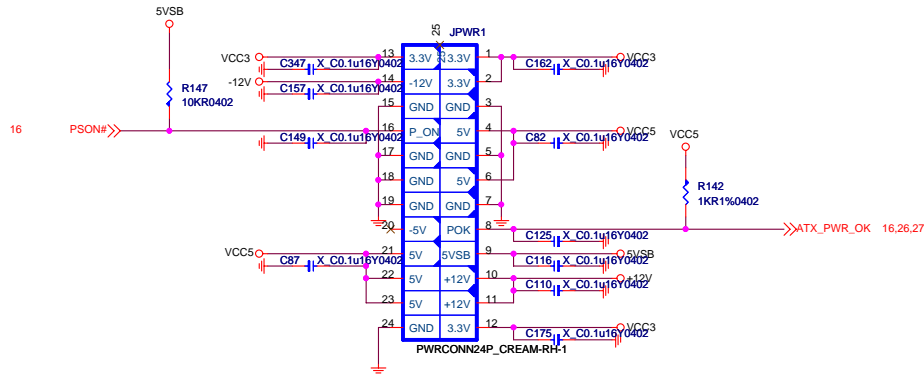
Rear USB Connector



Front USB Connector



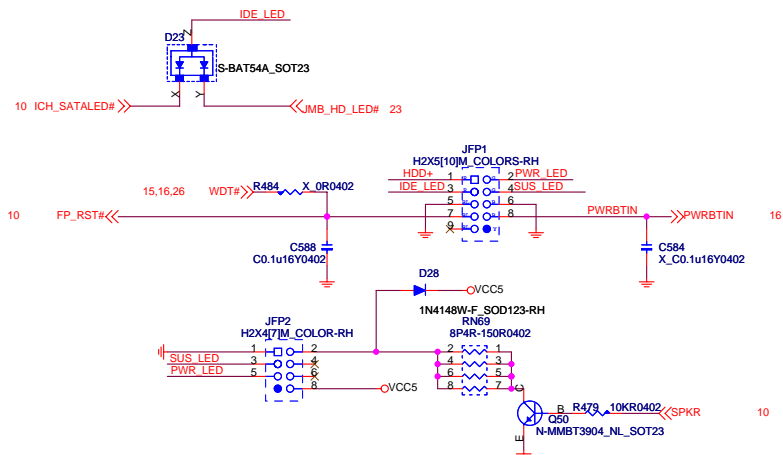
ATX POWER CONNECTOR



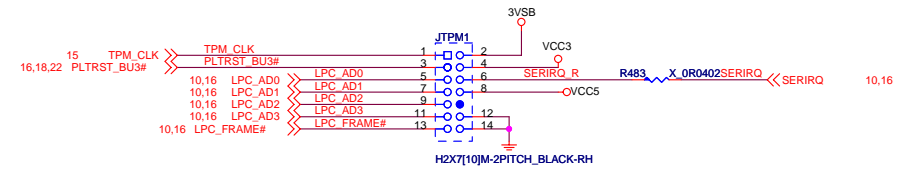
Cap. for EMI & Power



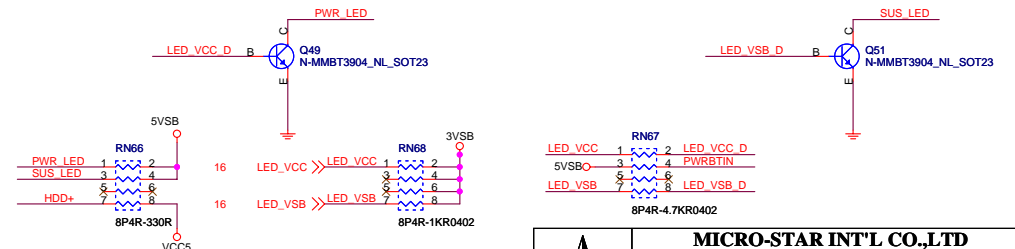
FRONT PANNEL



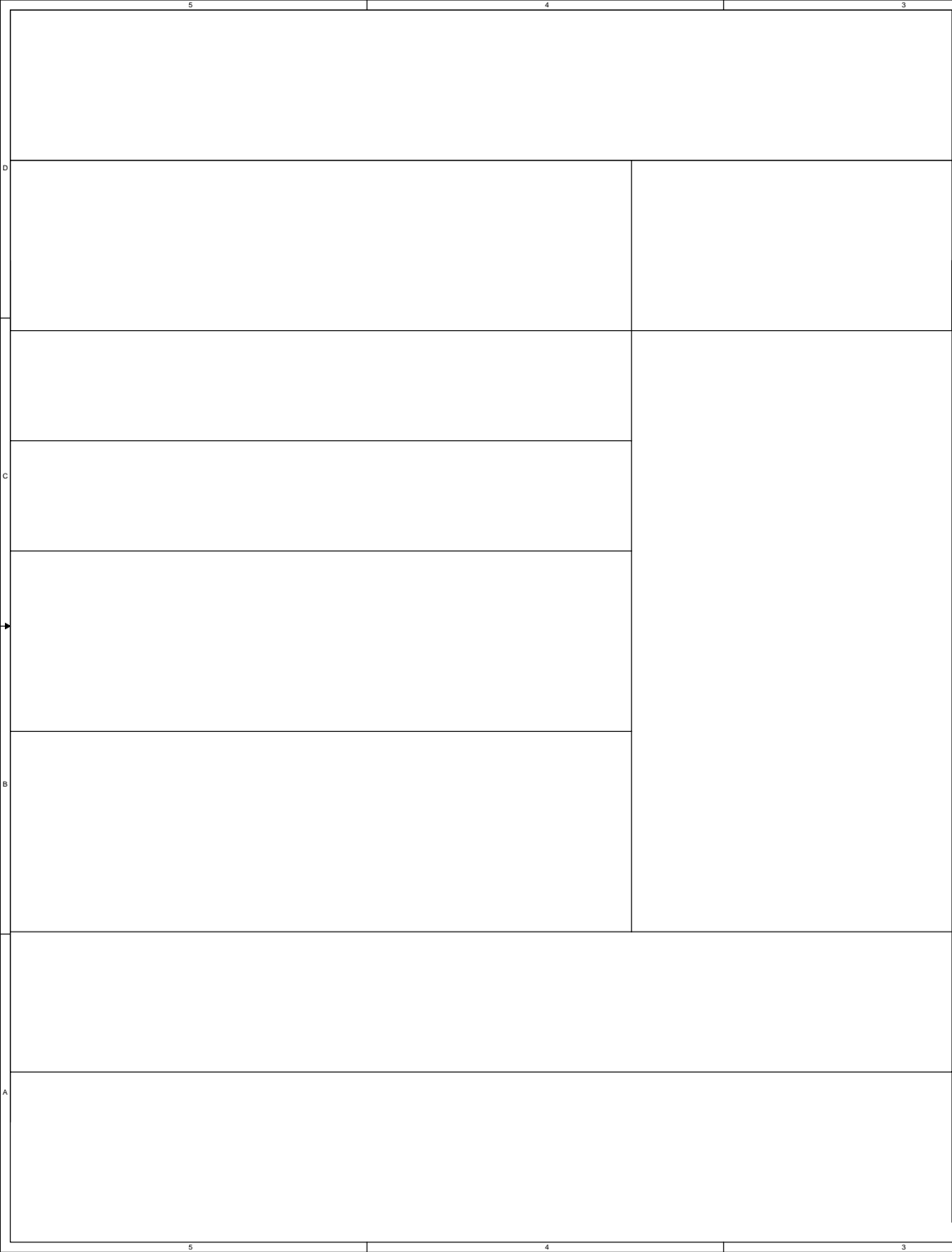
TPM



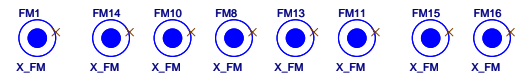
LED (for Fintek 71882)



MICRO-STAR INT'L CO.,LTD			
MS-7513			
Size	Document Description	Rev	
Custom	ATX PWR-Connector & Front Panel & EMI	0A	
Date:	Thursday, March 13, 2008	Sheet	29 of 34



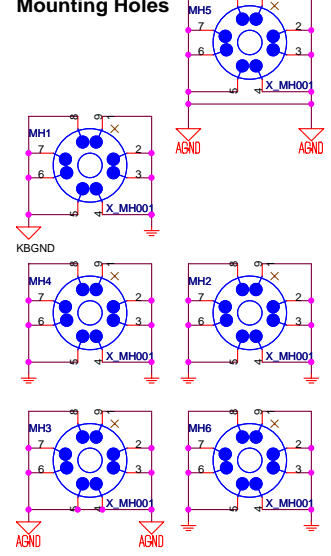
Optical Fiducial Marks-120



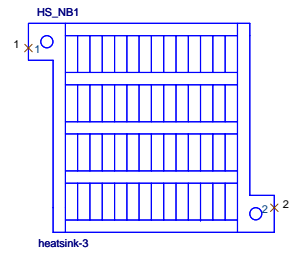
Optical Fiducial Marks-100



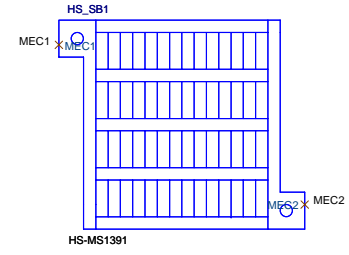
Mounting Holes



EMI



Simulation



MICRO-STAR INT'L CO.,LTD		
MS-7513		
Size	Document Description	Rev
Custom	Manual Parts & Option Parts	0A
Date: Thursday, March 13, 2008	Sheet 30	of 34